

## 測試報告

## Test Report

號碼(No.) : CT/2016/60824

日期(Date) : 2016/06/29

頁數(Page) : 1 of 4

川本國際包裝有限公司

CHUANPEN INTERNATIONAL PACKING CO., LTD.

台中市南屯區永春東二路5號

NO. 5, YONGCHUN E. 2ND RD., NANTUN DIST., TAICHUNG CITY 408, TAIWAN



以下測試樣品係由申請廠商所提供及確認 (The following sample(s) was/were submitted and identified by/on behalf of the applicant as) :

送樣廠商(Sample Submitted By) : 川本國際包裝有限公司 (CHUANPEN INTERNATIONAL PACKING CO., LTD.)  
樣品名稱(Sample Description) : 掛耳式內袋  
樣品型號(Style/Item No.) : CPLP-JP668  
樣品材質(Sample Material) : PET  
原產國(Country of Origin) : 日本 (JAPAN)  
收件日期(Sample Receiving Date) : 2016/06/21  
測試期間(Testing Period) : 2016/06/21 TO 2016/06/29

## 測試需求(Test Requested) :

依據客戶指定, 參考中華民國食品器具容器包裝衛生標準 (102.08.20部授食字第1021350146號令修正) 進行測試。測試項目請參閱測試結果表格。 / As specified by client, with reference to Sanitation Standard for Food Utensils, Containers and Packages (MOHW Food No. 1021350146 was amended on 2013/08/20) to conduct test. Please refer to result table for testing item(s).

測試結果(Test Results) : 請見下一頁 (Please refer to next pages).

  
Troy Chang, Manager-Tech  
Signed for and on behalf of  
SGS TAIWAN LTD.  
Chemical Laboratory - Taipei

This document is issued by the Company subject to its General Conditions of Service printed overleaf, available on request or accessible at <http://www.sgs.com/en/Terms-and-Conditions.aspx> and, for electronic format documents, subject to Terms and Conditions for Electronic Documents at <http://www.sgs.com/en/Terms-and-Conditions/Termse-Documents.aspx>. Attention is drawn to the limitation of liability, indemnification and jurisdiction issues defined therein. Any holder of this document is advised that information contained hereon reflects the Company's findings at the time of its intervention only and within the limits of client's instruction, if any. The Company's sole responsibility is to its Client and this document does not exonerate parties to a transaction from exercising all their rights and obligations under the transaction documents. This document cannot be reproduced, except in full, without prior written approval of the Company. Any unauthorized alteration, forgery or falsification of the content or appearance of this document is unlawful and offenders may be prosecuted to the fullest extent of the law. Unless otherwise stated the results shown in this test report refer only to the sample(s) tested.



www.chuanpen-packing.com

## 測試報告

## Test Report

號碼(No.) : CT/2016/60824

日期(Date) : 2016/06/29

頁數(Page) : 2 of 4

川本國際包裝有限公司

CHUANPEN INTERNATIONAL PACKING CO., LTD.

台中市南屯區永春東二路5號

NO. 5, YONGCHUN E. 2ND RD., NANTUN DIST., TAICHUNG CITY 408, TAIWAN



### 測試結果(Test Results)

測試部位(PART NAME)No. 1 : 掛耳式內袋

測試項目 (Test Items)	單位 (Unit)	測試方法 (Method)	定量 極限 (LOQ)	結果 (Result) No. 1	限值 (Limit)
鄰苯二甲酸二(2-乙基己基)酯 (正庚烷, 25°C, 1小時) / DEHP (Di-(2-ethylhexyl) phthalate) (CAS No.: 117-81-7) (n-Heptane, 25°C, 1 hour)	ppm	參考食品器具、容器、包裝檢驗方法-塑膠類之檢驗(102年11月13日部授食字第1021950607號公告), 以氣相層析/質譜儀檢測。 / With reference to Sanitation Standard for Food Utensils, Containers and Packages-Plastics (MOHW Food No. 1021950607 announced, November 13, 2013). Analysis was performed by GC/MS.	0.05	n. d.	1.5
鄰苯二甲酸二丁酯 (正庚烷, 25°C, 1小時) / DBP (Di-n-butyl phthalate) (CAS No.: 84-74-2) (n-Heptane, 25°C, 1 hour)	ppm		0.05	n. d.	0.3
鄰苯二甲酸丁苯甲酯 (正庚烷, 25°C, 1小時) / BBP (Butyl Benzyl phthalate) (CAS No.: 85-68-7) (n-Heptane, 25°C, 1 hour)	ppm		0.05	n. d.	30
鄰苯二甲酸二異癸酯 (正庚烷, 25°C, 1小時) / DIDP (Diisodecyl phthalate) (CAS No.: 26761-40-0; 68515-49-1) (n-Heptane, 25°C, 1 hour)	ppm		0.5	n. d.	9
鄰苯二甲酸二異壬酯 (正庚烷, 25°C, 1小時) / DINP (Diisononyl phthalate) (CAS No.: 28553-12-0; 68515-48-0) (n-Heptane, 25°C, 1 hour)	ppm		0.5	n. d.	9
己二酸二(2-乙基己基)酯 (正庚烷, 25°C, 1小時) / DEHA (Di-2-ethylhexyl Adipate) (CAS No.: 103-23-1) (n-Heptane, 25°C, 1 hour)	ppm		0.05	n. d.	18

www.chuanpen-packing.com

川本國際包裝

This document is issued by the Company subject to its General Conditions of Service printed overleaf, available on request or accessible at <http://www.sgs.com/en/Terms-and-Conditions.aspx> and, for electronic format documents, subject to Terms and Conditions for Electronic Documents at <http://www.sgs.com/en/Terms-and-Conditions/TermsofDocument.aspx>. Attention is drawn to the limitation of liability, indemnification and jurisdiction issues defined therein. Any holder of this document is advised that information contained hereon reflects the Company's findings at the time of its intervention only and within the limits of client's instruction, if any. The Company's sole responsibility is to its Client and this document does not exonerate parties to a transaction from exercising all their rights and obligations under the transaction documents. This document cannot be reproduced, except in full, without prior written approval of the Company. Any unauthorized alteration, forgery or falsification of the content or appearance of this document is unlawful and offenders may be prosecuted to the fullest extent of the law. Unless otherwise stated the results shown in this test report refer only to the sample(s) tested.

SGS Taiwan Ltd. 台灣檢驗科技股份有限公司

25, Wu Chyuan 7th Road, New Taipei Industrial Park, Wu Ku District, New Taipei City, Taiwan / 新北市五股區新北產業園區五權七路25號  
t+886 (02)2299 3939 f+886 (02)2299 3237 www.sgs.tw

Member of the SGS Group





www.chuanpen-packing.com

## 測試報告

## Test Report

號碼(No.): CT/2016/60824

日期(Date): 2016/06/29

頁數(Page): 3 of 4

川本國際包裝有限公司

CHUANPEN INTERNATIONAL PACKING CO., LTD.

台中市南屯區永春東二路5號

NO. 5, YONGCHUN E. 2ND RD., NANTUN DIST., TAICHUNG CITY 408, TAIWAN



測試項目 (Test Items)	單位 (Unit)	測試方法 (Method)	定量 極限 (LOQ)	結果 (Result)	限值 (Limit)
				No. 1	
重金屬(以鉛計)-(4%醋酸, 95°C, 30分鐘) / Heavy metal (as Pb)-(4% acetic acid, 95°C, 30 min)	ppm	參考食品器具、容器、包裝檢驗方法-聚 對苯二甲酸乙二酯(PET)塑膠類之檢驗 (MOHWU0006.02, 104年10月29日部授食 字第1041901950號公告). / As described in Methods of Test for Food Utensils, Containers and Packages - Test of Polyethylene Terephthalate (PET) Plastic Products (MOHWU0006.02, MOHW Food No. 1041901950 announced, October 29, 2015).	1	Negative	1

### 備註(Note):

- 0.1wt% = 1000ppm
- LOQ = Limit of Quantification (定量極限)
- n.d. = Not Detected = 小於 (less than) LOQ (未檢出)
- 基於商業競爭及其他因素考量, 除了第一頁的資料以外, 顧客表示無法提供其餘與樣品相關的資料。/ Due to the commercial competition and other consideration the client can't provide information related to the submitted sample besides the information listed on the page one.
- Negative = Undetectable 陰性(未偵測到); Positive = Detectable 陽性(已偵測到)
- 測試報告僅就委託測試者之委託事項提供測試結果, 至若本產品之合法性, 仍應由主管機關依法判斷。(The test report is the test result issued by the testing institutions as requested by the consignor. Regarding to the legitimacy of the product, it shall be determined by the authorities according to the law.)



www.chuanpen-packing.com

川本國際包裝

This document is issued by the Company subject to its General Conditions of Service printed overleaf, available on request or accessible at <http://www.sgs.com/en/Terms-and-Conditions.aspx> and, for electronic format documents, subject to Terms and Conditions for Electronic Documents at <http://www.sgs.com/en/Terms-and-Conditions/Terms-Document.aspx>. Attention is drawn to the limitation of liability, indemnification and jurisdiction issues defined therein. Any holder of this document is advised that information contained hereon reflects the Company's findings at the time of its intervention only and within the limits of client's instruction, if any. The Company's sole responsibility is to its Client and this document does not exonerate parties to a transaction from exercising all their rights and obligations under the transaction documents. This document cannot be reproduced, except in full, without prior written approval of the Company. Any unauthorized alteration, forgery or falsification of the content or appearance of this document is unlawful and offenders may be prosecuted to the fullest extent of the law. Unless otherwise stated the results shown in this test report refer only to the sample(s) tested.

SGS Taiwan Ltd. 台灣檢驗科技股份有限公司

25, Wu Chyuan 7th Road, New Taipei Industrial Park, Wu Ku District, New Taipei City, Taiwan / 新北市五股區新北產業園區五權七路25號  
t+886 (02)2299 3939 f+886 (02)2299 3237 www.sgs.tw

Member of the SGS Group

## 測試報告

## Test Report

號碼(No.) : CT/2016/60824

日期(Date) : 2016/06/29

頁數(Page) : 4 of 4

川本國際包裝有限公司

CHUANPEN INTERNATIONAL PACKING CO., LTD.

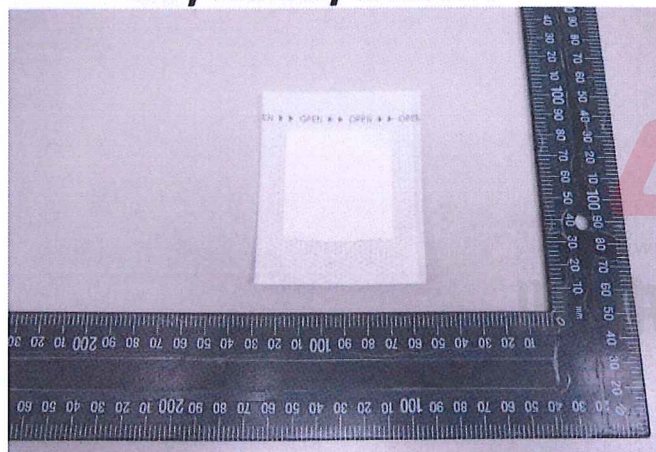
台中市南屯區永春東二路5號

NO. 5, YONGCHUN E. 2ND RD., NANTUN DIST., TAICHUNG CITY 408, TAIWAN

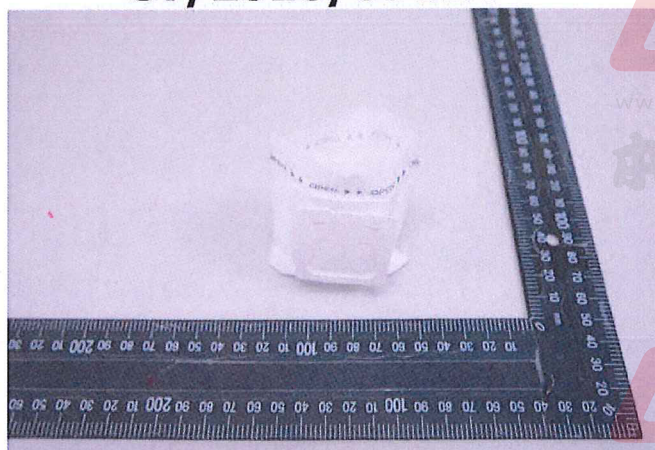


\* 照片中如有箭頭標示，則表示為實際檢測之樣品/部位。\*  
(The tested sample / part is marked by an arrow if it's shown on the photo.)

CT/2016/60824



CT/2016/60824



\*\* 報告結尾 (End of Report) \*\*

This document is issued by the Company subject to its General Conditions of Service printed overleaf, available on request or accessible at <http://www.sgs.com/en/Terms-and-Conditions.aspx> and, for electronic format documents, subject to Terms and Conditions for Electronic Documents at <http://www.sgs.com/en/Terms-and-Conditions/Terms-Document.aspx>. Attention is drawn to the limitation of liability, indemnification and jurisdiction issues defined therein. Any holder of this document is advised that information contained hereon reflects the Company's findings at the time of its intervention only and within the limits of client's instruction, if any. The Company's sole responsibility is to its Client and this document does not exonerate parties to a transaction from exercising all their rights and obligations under the transaction documents. This document cannot be reproduced, except in full, without prior written approval of the Company. Any unauthorized alteration, forgery or falsification of the content or appearance of this document is unlawful and offenders may be prosecuted to the fullest extent of the law. Unless otherwise stated the results shown in this test report refer only to the sample(s) tested.